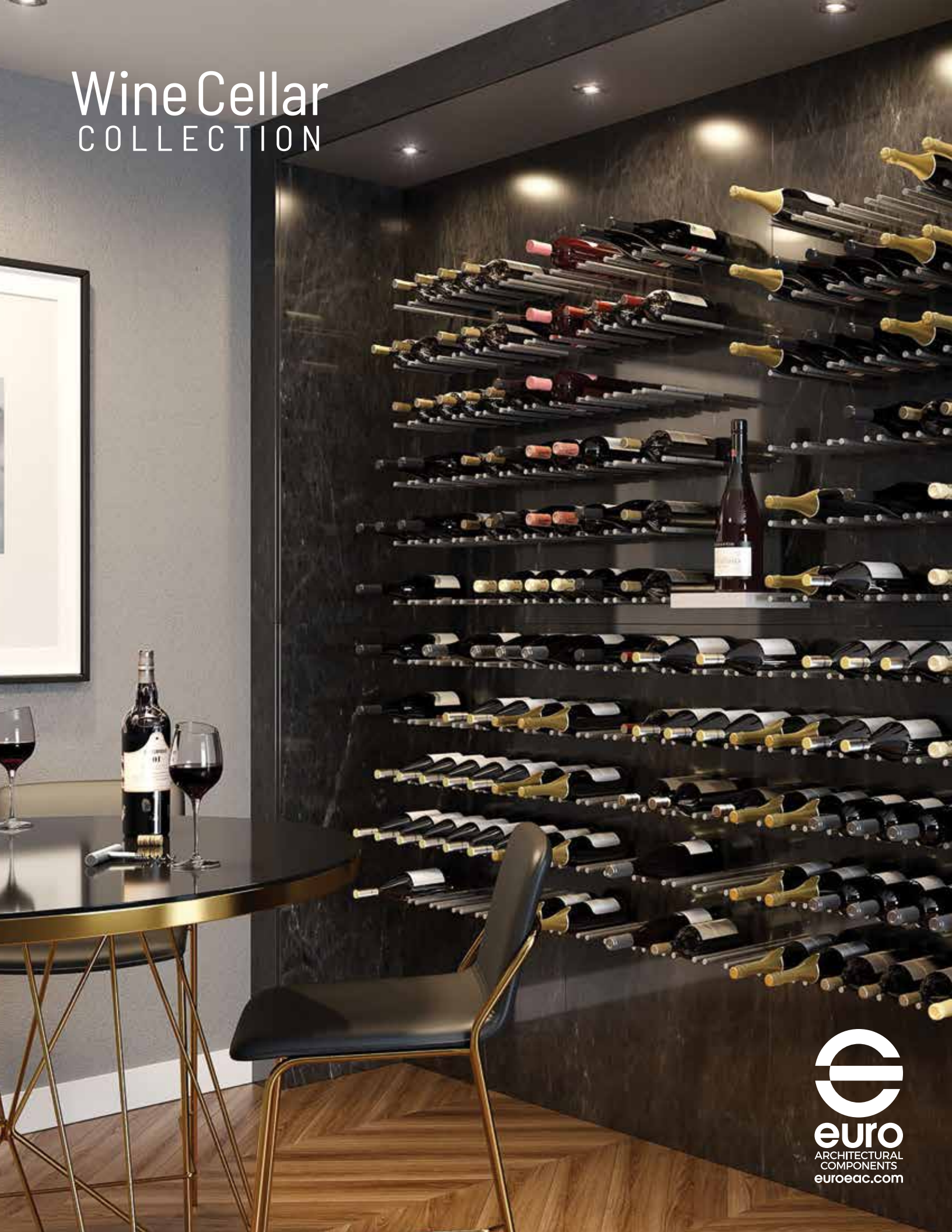


Wine Cellar COLLECTION



Wine Pegs

Our wall-mounted **Wine Pegs** offer a refined and functional wine storage system to professional trades, architects, interior designers, and handy homeowners. They hold **750mL standard bottles** and add a modern touch and high-quality finish to your wine cellar or wall with our precision-made, patented systems.

Choose from the **Pieno**, **Leggero**, or **Vitigno 1-2-3** based on your design and layout preference - robust or minimalist look with bottles held in place either perpendicular or parallel to the wall. Available in 3 finishes: Aluminum, Matte Black, and Gold.

Features

- Solid Anodized Aluminum material.
- 5 models available in 3 finishes. Each box of pegs allows you to store 4-6 bottles, depending on the model.
- Nitrile or silicone rubber O-rings are pre-installed on the pegs, providing non-slip stability and considerably reducing installation time.
- Screws are included along with spring lock washer to help maintain the pegs tightly in place. No visible hardware.
- Fully customizable configurations and easy to install the pegs according to our recommended layout or create your own.
- Freedom to design a complete wine cellar or a simple wall panel to hang in your kitchen to your exact specifications.



Pieno



Leggero

Pegs are installed perpendicular to the wall with the cork facing outwards.

Dimensions = 7 1/16"L x 1"W

Each box includes 6 pegs.

There is 1 JCB-B bolt and 1 spring lock washer per peg.

Stores 5 bottles in one row, or 4 bottles in two rows. (2 bottles are held on 3 pegs.)

Nitrile rubber O-rings are pre-installed on the pegs.

Pegs are installed perpendicular to the wall with the cork facing outwards.

Dimensions = 7 1/16"L x 1/2"W

Each box includes 6 pairs of pegs.

There is 1 JCB-B bolt and 1 spring lock washer per peg.

Stores 6 bottles, 1 per pair.

Nitrile rubber O-rings are pre-installed on the pegs.



WC500010A
Aluminum



WC400010A
Aluminum



WC500900B
Matte Black



WC400900B
Matte Black



WC500165G
Gold



WC400165G
Gold

Wine pegs require a wall panel for secure installation. The panel thickness and design will determine



Vitigno 1

Pegs are designed to support the bottle by the neck and bottom with the bottle parallel to the wall.

Dimensions = 3 3/8"L x 3/4"W

Each box includes 6 pairs of pegs.

There is 1 JCB-B bolt and 1 spring lock washer per peg.

Stores 6 bottles, 1 per pair.

Silicone rubber O-rings are pre-installed on the pegs.



Vitigno 2

Pegs are designed to support the bottle by the neck and bottom with the bottle parallel to the wall.

Dimensions = 7 1/16"L x 3/4"W

Each box includes 3 pairs of pegs.

There is 1 JCB-B bolt and 1 spring lock washer per peg.

Stores 6 bottles, 2 per pair.

Silicone rubber O-rings are pre-installed on the pegs.



Vitigno 3

Pegs are designed to support the bottle by the neck and bottom with the bottle parallel to the wall.

Dimensions = 11 13/16"L x 3/4"W

Each box includes 2 pairs of pegs.

There is 1 JCB-B bolt and 1 spring lock washer per peg.

Stores 6 bottles, 3 per pair.

Silicone rubber O-rings are pre-installed on the pegs.



WC601010A
Aluminum



WC602010A
Aluminum



WC603010A
Aluminum



WC601900B
Matte Black



WC602900B
Matte Black



WC603900B
Matte Black



WC601165G
Gold



WC602165G
Gold



WC603165G
Gold

Accessories



Z-Shaped Moulding (SPECIAL ORDER ONLY)

Solid aluminum Z-shaped moulding in mill finish. Ideal for cabinets, panels, and furniture for showrooms and trade shows. For fasteners on wood substrates, use #14 pan head wood screws between 2 1/2" to 4" in length. For other substrates, contact us to inquire. Width = 1/4" • Height = 1 3/8" • Thickness = 1/8" • Lift-off = 3/8"

WC318708D10 8' Length

WC318712D10 12' Length

Wood Racks (SPECIAL ORDER ONLY)

Our classic wood racks come in a variety of sizes to suit your wine cellar needs. Racks are in Torrefied Trembling Aspen finish. Wall support included. Safe for long-term storage of bottles. Easy to assemble; no cutting required.

Classic Standard Racks store 750mL standard bottles. The space to place the bottle in the rack is 3 1/2"W x 2 7/8"H.

Classic Diamond Rack bottle capacity refers to 750mL standard bottles. Bottle capacity may differ when storing different sizes of bottles.



WCCIS124551
Standard

12 bottles
5"W x 45"H x 9"D



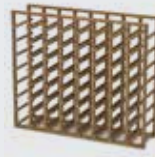
WCCID323051
Standard

32 bottles
17 1/2"W x 30"H x 9"D



WCCID484551
Standard

48 bottles
17 1/2"W x 45"H x 9"D



WCCID643051
Standard

64 bottles
35"W x 30"H x 9"D



WCCID964551
Standard

96 bottles
35"W x 45"H x 9"D



WCDA363051
Diamond

36 bottles
17 1/2"W x 30"H x 9"D

Under Cabinet Stemware Holders (SPECIAL ORDER ONLY)

Our under cabinet stemware holders are made of steel material and available in several sizes in various finishes. All stemware holders are accompanied by mounting hardware along with a back bracket to use for face frame cabinet application. Stemware holders help you organize your collection of stemware and match your kitchen/bar. Ideal storage solution for several types of wine glasses, making them easy to reach.

All openings of the holders are 3 1/2"W x 3/4"H and accommodates glass bases less than 15/16"W.



11" Holder

4 1/4"W x 1 1/2"H x 11"D
Holds 2-3 wine glasses

WC315011BR - Brass
WC315011CP - Chrome

WC315011ORB - Oil Rubbed Bronze
WC315011SN - Satin Nickel



16" Holder

4 1/4"W x 1 1/2"H x 16"D
Holds 4 wine glasses

WC315016BR - Brass
WC315016CP - Chrome

WC315016ORB - Oil Rubbed Bronze
WC315016SN - Satin Nickel



18" Holder

4 1/4"W x 1 1/2"H x 18"D
Holds 5 wine glasses

WC315018CP - Chrome
WC315018ORB - Oil Rubbed Bronze
WC315018SN - Satin Nickel



Quad Holder

4 organizers attached together
17"W x 1 1/2"H x 11"D
Holds 8-12 wine glasses

WC345011CP - Chrome
WC345011ORB - Oil Rubbed Bronze
WC345011SN - Satin Nickel